



Annual Report 2021-2022

Table of Contents

Page 3

Our Agency

Page 4

Head Start Director Message

Page 5

Shared Governance

Page 6

Agency Budget 2021-2022

Page 7

Fresno Migrant/Seasonal Head Start Budget

Page 8

Children & Families Served

Page 9

Enrollment

Page 10

Medical & Dental Services

Page 11

Parent & Family Data

Page 12

Program Staff & Qualification

Page 13 -14

School Readiness

Page 15

School Readiness Goals

Page 16 -19

2021-2022 Family Outcomes

Page 20

Fresno Migrant / Seasonal Head Start Locations



Our Agency

Community Action Partnership of Madera County (CAPMC), a 501(c)(3) non-profit organization, has dedicated its programs and services to address the needs of the low-income residents of Madera County for over the past four decades. Although Madera County is our primary focus for serving low-income individuals and families, CAPMC has also been awarded funds to expand Head Start services to Regional families in Mariposa County and Migrant/Seasonal families in Fresno County.

CAPMC was established in 1965 as a result of the Economic Opportunity Act (EOA) of 1964. The EOA was signed into law by President Lyndon B. Johnson to support his declaration of an unconditional “War on Poverty.” The act was established to promote school readiness, enhance children’s social and cognitive development by providing educational, health, nutritional, social, and other services to enrolled children and their families. Each county in the United States designated a community action agency to be responsive to the needs of the low-income individuals and families by providing programs and services that assist them in becoming stable and self-reliant.

CAPMC is a leader in “helping people, changing lives.” We have received local and national recognition for implementing creative, cost-effective programs to serve the low-income residents of Madera, Mariposa, and Fresno counties. As the region continues to grow and change, CAPMC is also transforming itself to best serve those in need. CAPMC continues to examine its current programs to ensure that they meet the highest levels of efficiency and effectiveness. As an agency, leaders regularly seek to initiate innovative programs that complement and broaden our existing ones, and search for the best practices from other agencies in our community action network. CAPMC continues to maintain the financial integrity of its programs to maximize resources to the greatest benefit of CAPMC program participants and other customers and stakeholders. Since its inception in 1965, CAPMC’s mission and vision have remained the same:

Mission: Helping people, changing lives and making our community a better place to live by providing resources and services that inspire personal growth and independence.

Vision: CAPMC will be recognized as a premier social service agency that eliminates the effects of poverty by helping people obtain knowledge and skills to achieve self-reliance and economic stability...one life at a time.

Head Start Director Message

Community Action Partnership of Madera County's Head Start Department would like to share important information regarding the services that the Fresno Migrant/Seasonal Head Start program provides to the children and families in Fresno County. The 2021-2022 Annual Report's data provides an overview of the funding, staffing, enrollment, attendance, school readiness results, and overall services provided by the program. Fresno Migrant/Seasonal Head Start is a Delegate of Community Action Partnership of San Luis Obispo. CAP of Madera County and CAP of San Luis Obispo enter into contract to serve a selected number of migrant/seasonal children. For the 2021-2022 program year, CAPMC was funded to serve 469 children. Due to the on-going community challenges with COVID-19 and on-going drought, CAPMC was unable to meet its funded enrollment. The Fresno Migrant Seasonal Head Start services had to be modified in order to safely provide services to children and families. Although necessary changes were set in place, children and families received comprehensive services inclusive of education, health, nutrition, mental health, and disabilities. CAPMC's primary goal is to provide families with opportunities to engage with their children, increase their knowledge of their children's development, and ultimately, assist them in becoming their children's lifelong educators.

I want to extend my greatest gratitude to the HEROES of our program, our center staff. Center Director, Advocate, Teachers, Aides, Food Service, Janitors that were in the front lines providing services to the children and families. Without their dedication and commitment to serving the children and families in their communities; services to the children and families could not be possible.

Thank you to the Policy Committee, and Board of Directors for their continued support, and our community partners that make it possible for the program to provide assistance to families in need. This is truly a "community effort" to help families meet their needs and allow children to be successful in their educational path.



Respectfully,

Maritza Gomez-Zaragoza

Maritza Gomez

Head Start Program Director

Community Action Partnership of Madera County



Shared Governance

Board of Directors

Deborah Martinez
Department of Social Services

David Hernandez
Madera Unified School District

Robert Poythress
Madera County Board of Supervisors

Steve Montes
Madera City Council

Diana Palmer
City of Chowchilla

Debi Bray
Madera Chamber of Commerce

Alma Hernandez
Head Start Policy Council

Donald Holley
Community Affairs Expertise

Eric LiCalsi
Criminal Defense and Labor Law

Vicky Bandy
Early Childhood Education/Development

Martha Garcia
Central Madera/Alpha

Tyson Pogue
Eastern Madera County

Molly Hernandez
Fairmead/Chowchilla

Aurora Flores
Monroe/Washington

Policy Committee

Firebaugh

Representative: Angelica Garcia
Alternate: Cecilia Morales
Alternate: Guadalupe Rivera

Five Points

Representative: Nadya Luvian
Alternate: Miriam Torres
Alternate: Ana Tamayo

Mendota

Representative: Marianayelly Angeles
Alternate: Rosa Hernandez
Alternate: Rosalva Cisneros

Orange Cove

Representative: Irma Alvarez Solorzano
Alternate: Alejandro Aguilar

Casa Castellanos

Representative: Ivette Oregon
Alternate: Nely Gomez

Selma

Representative: Erika Zurita
Alternate: Patricia Hernandez

Inez C. Rodriguez

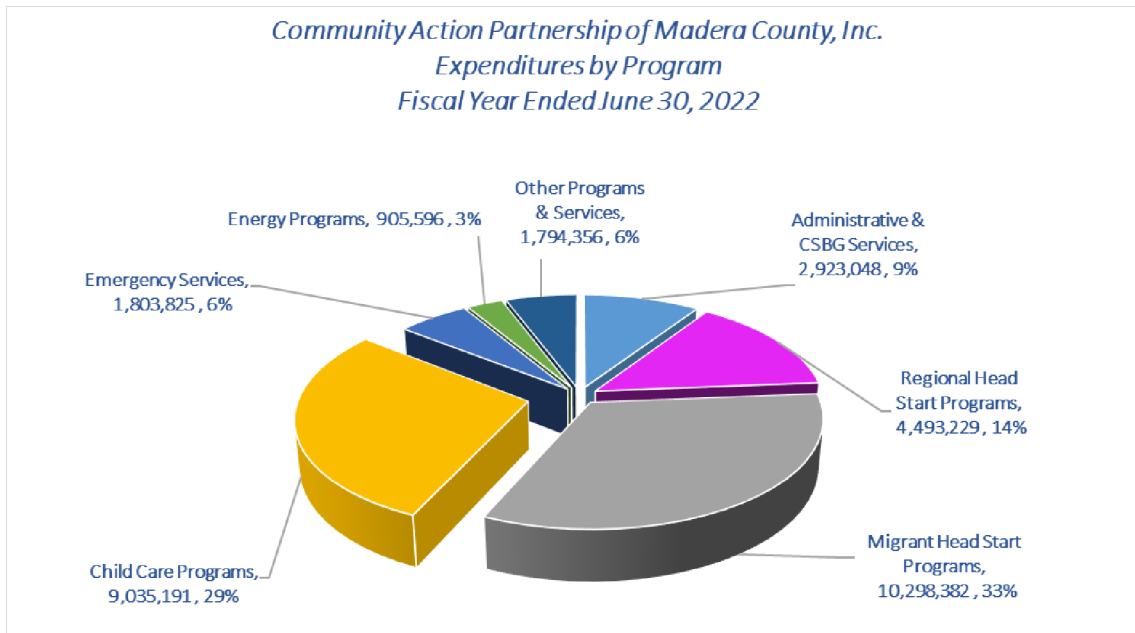
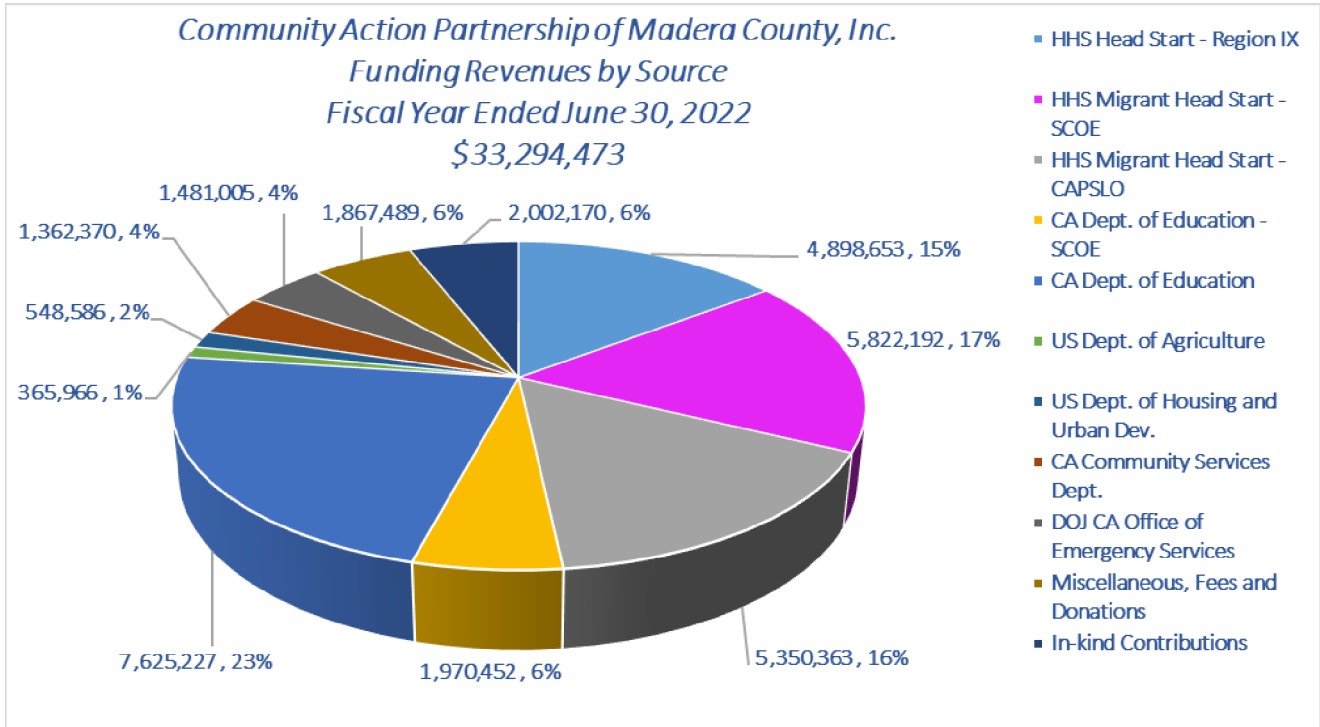
Representative: Anabel Torres
Alternate: Maria Luisa Martinez

Board of Directors Representative

Representative: Aurora Flores



Agency Budget 2021-2022



An audit was conducted by Randolph Scott & Company as of June 30, 2022. In the auditor's judgment, he/she had no reservation as to the fairness of presentation of Community Action Partnership of Madera County financial statements and their conformity with Generally Accepted Accounting Principles (GAAP). A "clean opinion" was given without any reservations of the financial condition. There were no findings or questioned costs or any material or significant internal control weaknesses noted during the audit.



2021 – 2022 Fresno Migrant/Seasonal Head Start Budget

Legal Name: Community Action Partnership of Madera County
Grant Number: 90CM9821-05

Number of Eligible Children Served in Fresno County:
0-2 Year Old's: 247
3-5 Year Old's: 140
Total: 387

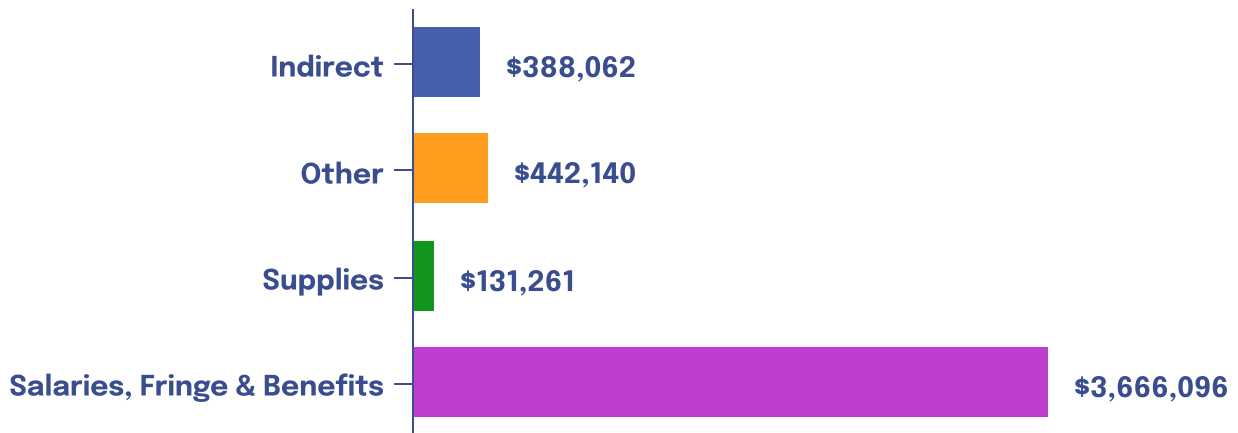
Program Option: Center-Based
Licensed by Community Care Licensing
Centers are open 10 hours per day.

- **Total Funds Awarded:**

Basic Funds: \$4,652,471
T&TA Funds: \$82,690

- **Non-Federal Funds:** \$645,704

Fiscal Year 2021-2022 Expenditures



In 2022 The office of Head Start acknowledge that Community Action Partnership of Madera County was in full compliance with all applicable Head Start Performance Standards, laws, regulations and policy requirements by issuing a letter based on a terminal review to Central California Migrant Head Start.



Children & Families Served

The Fresno Migrant/Seasonal Head Start Program did not meet the funded enrollment for the 2021-2022 program year due to COVID-19 pandemic that impacted recruitment and children enrollment. The program continues to offer a center-based option, five days per week. The breakdown of the ages of enrolled children is as follows.

469

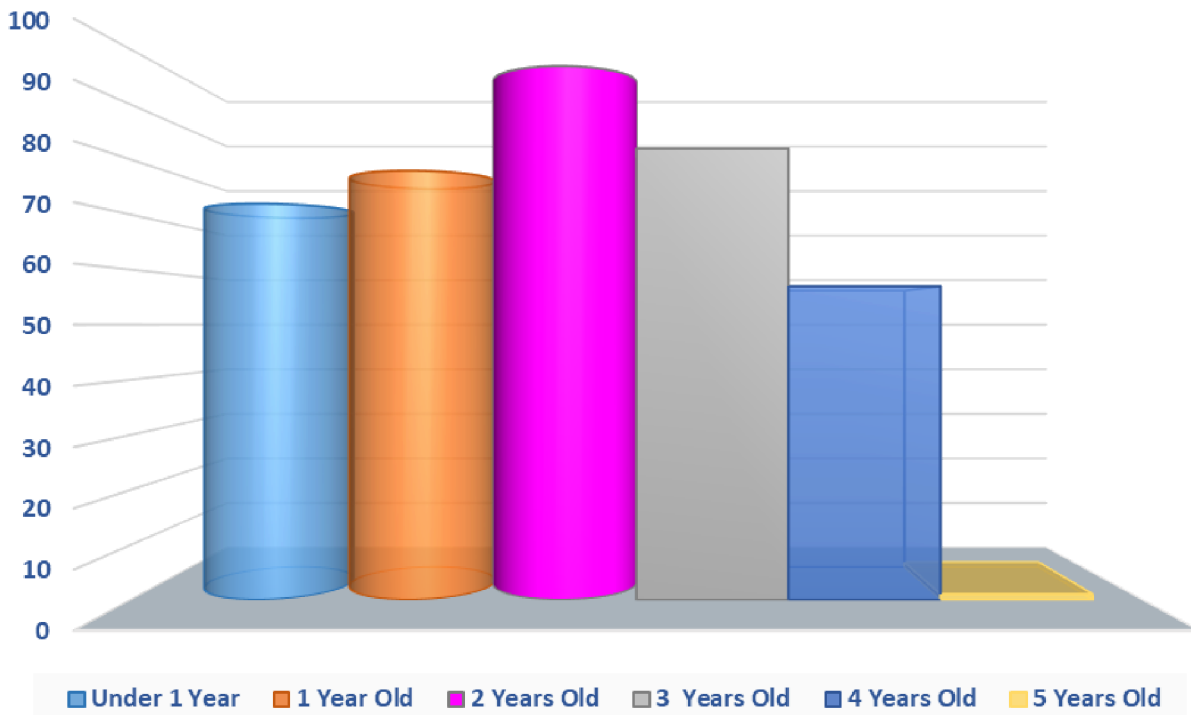
Funded Number of Children to be served in Fresno County

387

Total Number of Children Served in Fresno County

293

Total Number of Families Served

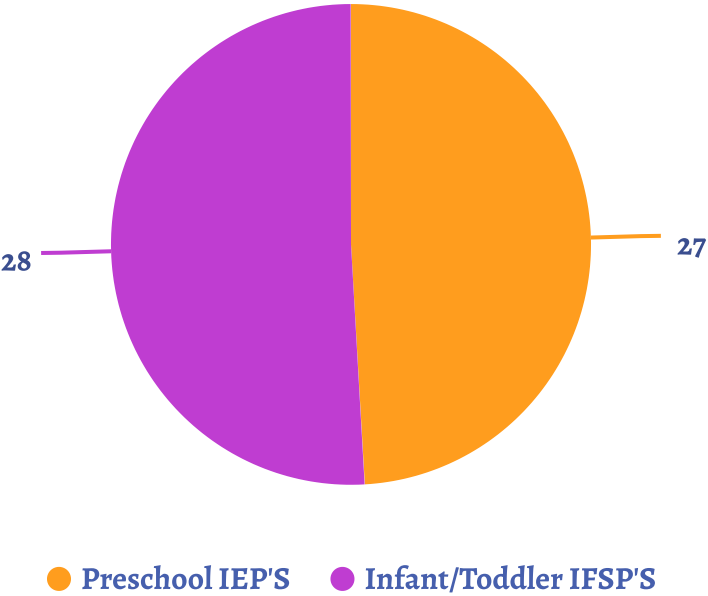


Enrollment:

Eligibility	Children Enrolled
Income Below 100% of Federal Poverty Line	309
Receipt of Public Assistance	18
Foster Children	0
Homeless	0
Over Income	43

Average Monthly Attendance
74.30%

Children with Disabilities:



Enrolled Children with Disabilities
14.21%



Medical & Dental Services

The Fresno Migrant/Seasonal Head Start Program aims to provide comprehensive services to all children and families enrolled. Below are the health related services the children and families have received.



Medical Services

- 385** Number of children with health insurance
- 91%** Percentage of children with up-to-date scheduled preventative health care
- 100%** Percentage of children with up-to-date on all immunizations appropriate for their age

Dental Services

- 207** Number of children with continuous, accessible dental care provided by a dentist
- 102** Number of children who received preventative care
- 220** Number of infant toddlers who are up-to-date with age-appropriate preventative dental care

Chronic Health Conditions

Number of children diagnosed with chronic condition needing medical treatment **19**

Recipients of treatment for chronic conditions

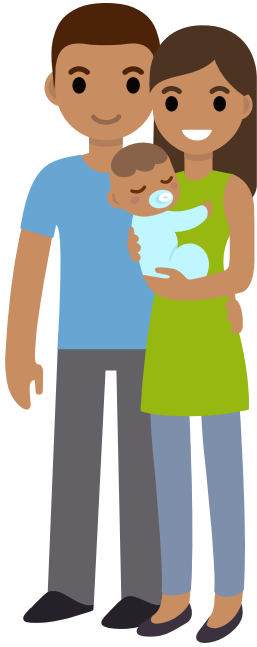
- Autism spectrum disorder (ASD) **5**
- Asthma **8**
- Hearing Problems **3**
- Vision Problems **7**

Body Mass Index

Underweight	9
Healthy Weight	67
Overweight BMI	13
Obese BMI	41



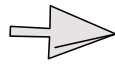
Parent & Family Data



Parent Education Level



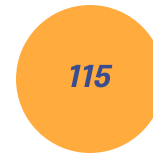
Family Type



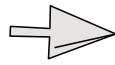
Two-Parent Families



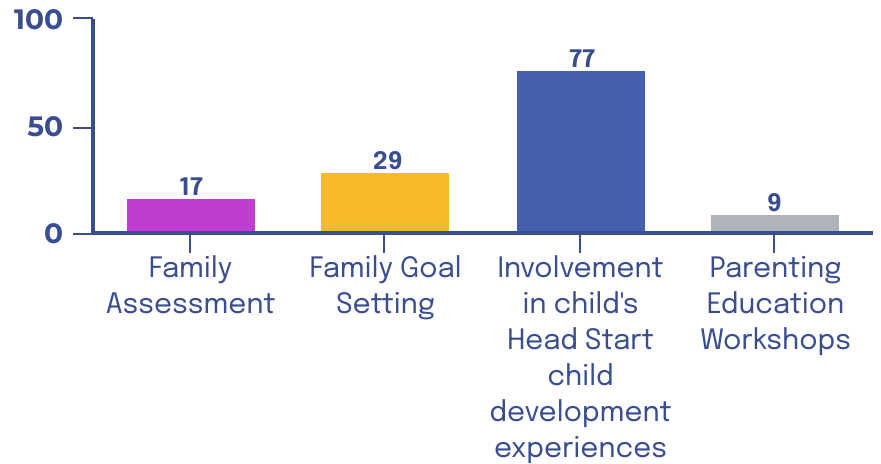
Single-Parent Families



Father Engagement



Number of fathers/father figures who were engaged in the following activities during the program year.



Program Staff & Qualifications

Mid-Management & Management Staff

<i>Graduate Degree</i>	<i>1</i>
<i>Bachelor's Degree</i>	<i>11</i>



Teaching Staff

	Preschool Classrooms	Infant/Toddler Classrooms
<i>Graduate Degree</i>	<i>0</i>	<i>0</i>
<i>Bachelor's Degree</i>	<i>2</i>	<i>1</i>
<i>Associate Degree</i>	<i>9</i>	<i>20</i>
<i>Child Development Associate Credential</i>	<i>7</i>	<i>9</i>
<i>Total</i>	<i>18</i>	<i>30</i>

Total Number of Staff

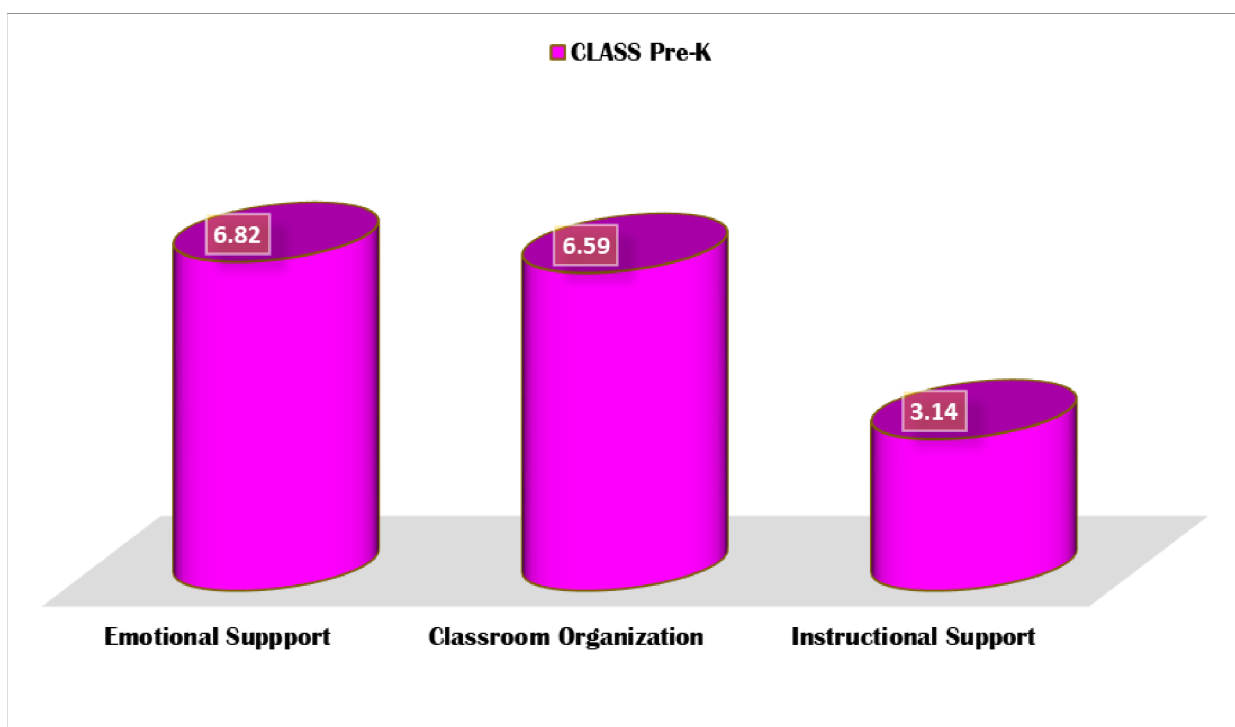
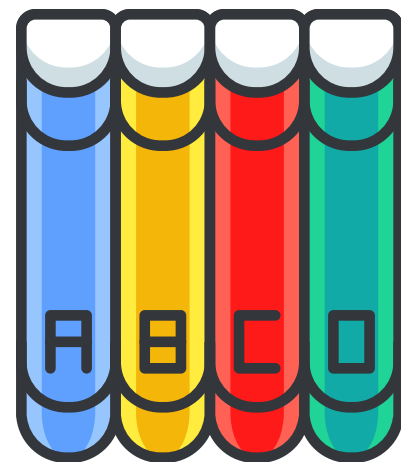
107



School Readiness

The Fresno Migrant/Seasonal Head Start program uses Frog Street Curriculum, a bilingual and multi-cultural research-based curriculum for children ages 0 to 5. Meets children developmental needs, supports school readiness providing individualized activities and strategies to strengthen their physical growth, reading, math, writing, language and thinking skills. Children's social-emotional development is supported through Conscious Discipline, which is embedded in Frog Street curriculum, building classroom communities where safety and caring are foundational and turn everyday situations into learning opportunities.

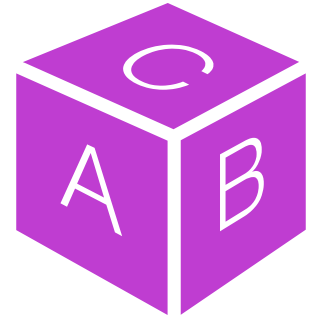
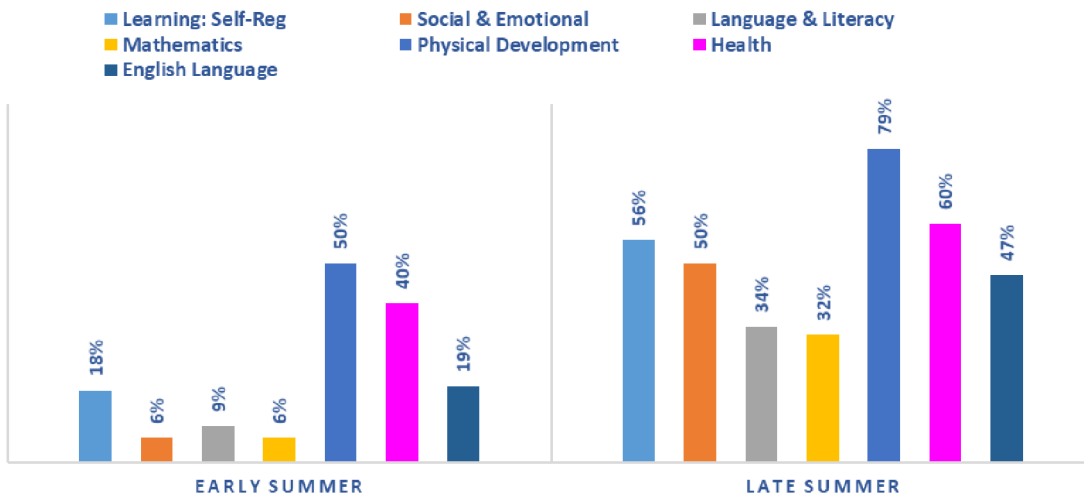
FMSHS utilizes the Classroom Assessment Scoring System (CLASS) to assess teacher-child interactions in the classroom. Data collected from CLASS is used to provide staff with professional development opportunities to improve teacher-child interactions and teaching practices.



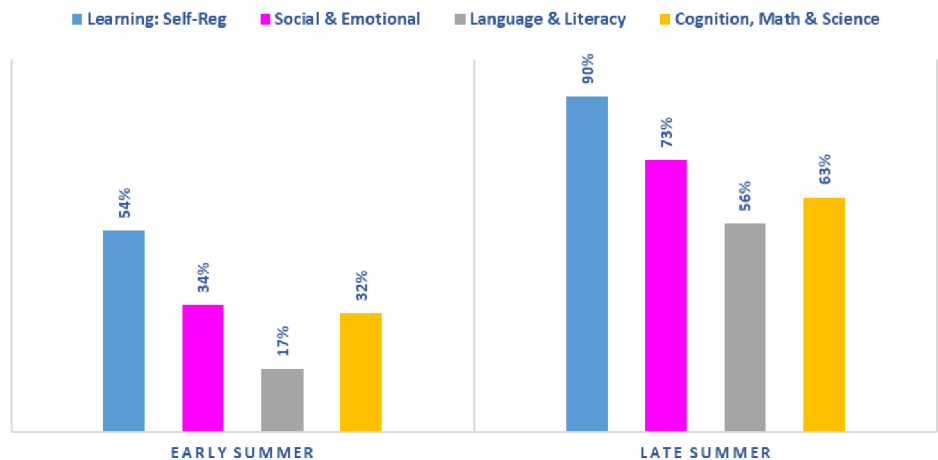
School Readiness

The California Department of Education Early Learning and Care Division, Desired Results system is designed to improve the quality of programs and services to all children from birth through 12 years of age who are enrolled in early care and education programs. Desired Results (DRDP) are defined as conditions of well-being for children and families. FMSHS collects child outcomes data twice a year. Teaching staff utilize child outcomes data to support children’s learning and development in the following domains: Approaches to Learning, Social Emotional Development, Language and Literacy Development, English Language Development, Cognition including math & science and Physical Development. Below are the 2021-2022 DRDP collection results from early and late summer.

2022 DRDP ASSESSMENT PRESCHOOLERS (3 TO 5 YEARS)



2022 DRDP ASSESSMENT INFANT/TODDLERS



School Readiness Goals

The Improving Head Start for School Readiness Act of 2007 and the School Readiness in Programs Serving Preschool Children Program Instruction (ACFPI0HS-11-04) require Head Start programs to adopt school readiness goals for preschool children. The School Readiness Plan describes how Community Action Partnership of Madera County/Fresno Migrant Seasonal Head Start will strategically integrate program services to improve the School Readiness Outcomes of Migrant Head Start children and families. The School Readiness Goals reflect that families are children's first teachers. The goals encompass the five essential domains of early learning and development from birth to 5 years for school and long-term success. The central domains are:



- Approaches to Learning
- Social Emotional Development
- Language and Literacy
- Cognition
- Perceptual, Motor and Physical Development.

Development of School Readiness Goals were developed in alignment with the Head Start Early Learning Outcomes Framework (HSELOF), California Infant/Toddler Learning & Development Foundations and California Preschool Learning Foundations.

Fresno Migrant Seasonal Head Start School Readiness Goals:

1. Children will demonstrate interest, curiosity and independence to learning including flexibility and behavior.
2. Children will show awareness of self and develop personal and playful relationships with other children.
3. Children will be able to demonstrate improvement on understanding complex communication, language and literacy skills increasing number of words used in communication with others.
4. Children will use math during daily routines and experiences, including sense of number and quantity, spatial awareness, and classification.
5. Children will demonstrate control, strength, and coordination of small and large muscles and demonstrate healthy behaviors.



2021-2022 Family Outcomes

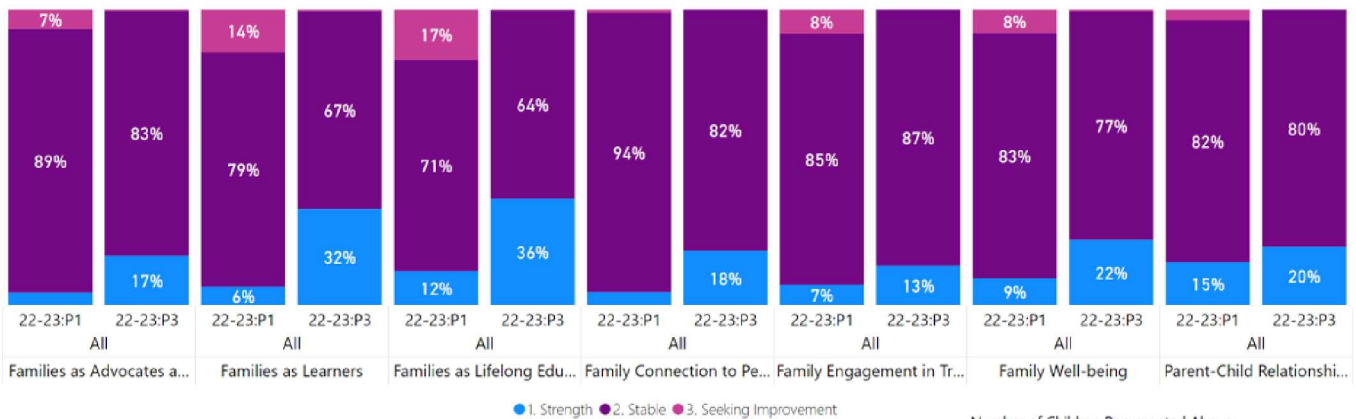
In the 2021-2022 program year, out of 183 parents of children enrolled in the summer program, 83% completed the pre and post family assessments to find their needs, interests and strengths on how the program may support them. Overwhelmingly, parents had significant growth under each of the Parent, Family, and Community Engagement Framework Outcomes. These results are a strong testament from the respondents about how much the CAPMC contributes to families' well-being from the beginning to the end of the season.



Fresno Migrant Head Start - All

Family Assessment Overview

PFCE Outcomes Area | Percentage by Response



Overall growth for each of the outcomes noted above are as follows:

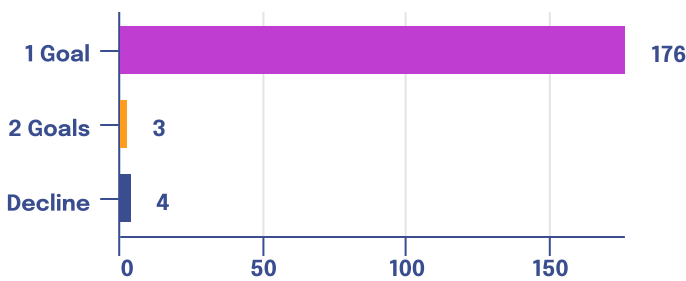
- Family Well-being – 20%
- Positive Parent Child relationships – 8%
- Families as Lifelong Educators – 41%
- Families as Learners – 39%
- Family Engagement in Transitions – 14%
- Family Connections to Peers and Community – 16%
- Families as Advocates and Leaders – 20%



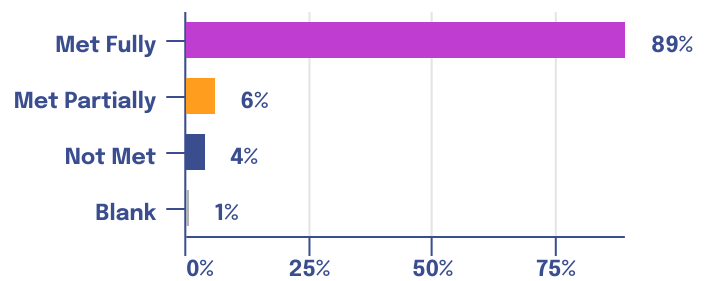
2021-2022 Family Outcomes

In the 2021-2022 program year, out of 293 families of children enrolled in the program, 179 established family goals. Parents were supported in accomplishing their goal by providing them resources and/or referral. Goals are aligned to the Parent Family Community Engagement Framework (PFCE). The results below show total goals established by parents, goal status at the end of the year and goal alignment to the Parent, Family and Community Engagement Framework.

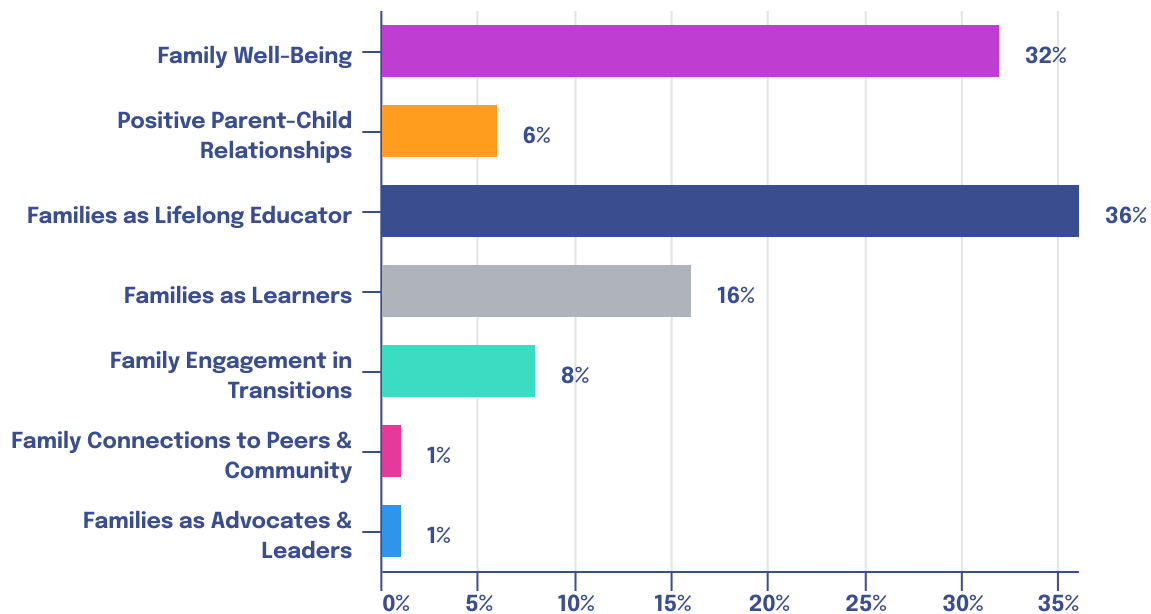
Total Goals Established by Parents



Goal Status



Goals by Family Outcome Area



2021-2022 Family Outcomes

The Ready Rosie parent curriculum was implemented during this year. Parents were provided the opportunity to attend Family Workshops during the monthly parent meetings and sign up for the platform to have access to the educational videos.

The following Ready Rosie family workshops were offered to parent during the parent meetings:

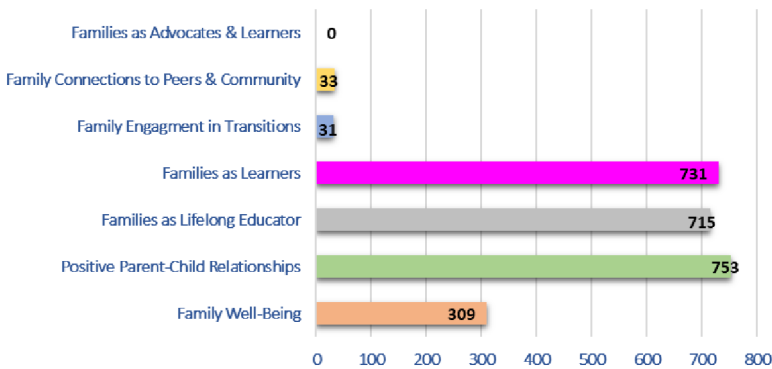
- Ready for Kindergarten
- Words Matter
- Families as Leaders
- Relationships Matter
- Families as Partners



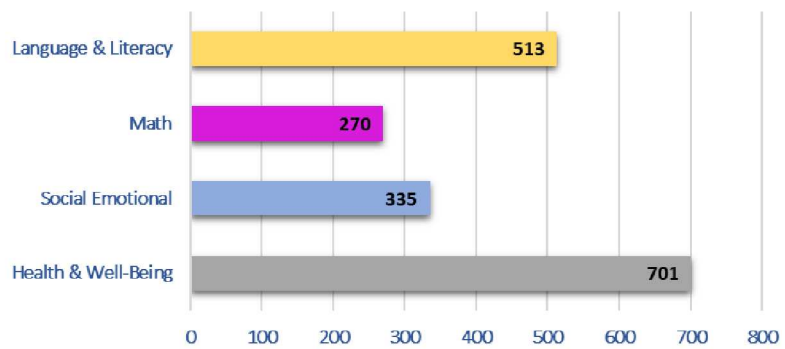
Out of 293 families in the program, 74% registered for the Ready Rosie platform.

- A total of 710 videos were viewed by parents. Out of the 740 videos viewed, the following is a breakdown of views aligned to the Early Learning Outcomes Framework (ELOF) and the Parent, Family, and Community Engagement (PFCE) framework:

Alignment to the Parent, Family & Community Engagement Framework



Alignment to the Early Learning Outcomes Framework



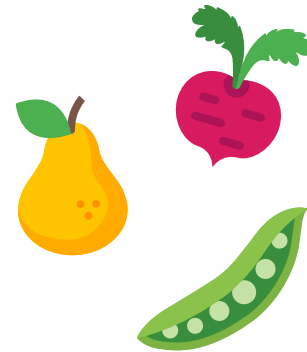
Parents actively participated not only in building their skills as their child's first teacher, but also in sharing decision-making responsibility for program planning, goals and objectives, recruitment criteria, selection and enrollment of children, the annual, program assessment and trainings during the Policy Council meetings.



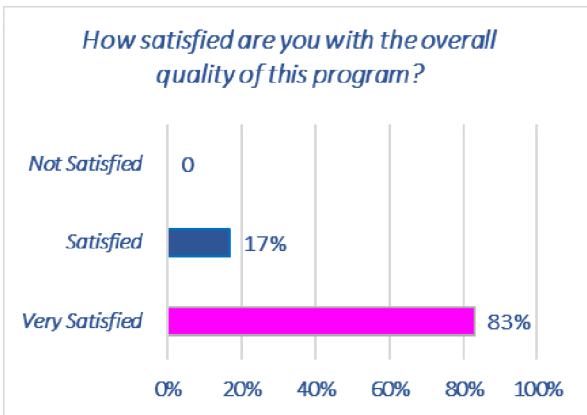
2021-2022 Family Outcomes

Another way parents participated was by attending the monthly parent meetings. A wide variety of training and educational opportunities were offered during these meetings. Training topics were provided to meet the needs or interests of families and include such as mental wellness, nutrition, child development, health, family relationships, school readiness, etc. The following are topics were provided to the parents during this year:

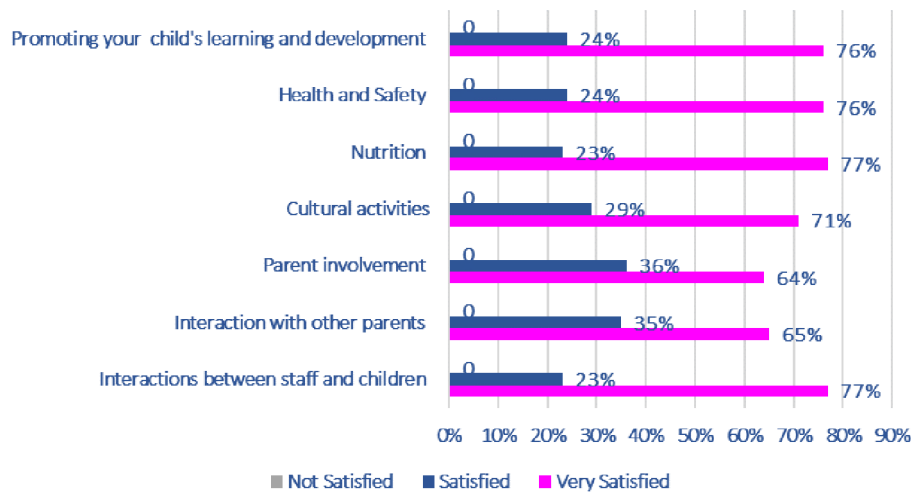
- Cal-Fresh: MyPlate/Sugary Drinks
- Nutrition: Plan, Shop, Save and Cook
- Financial Literacy
- Child Abuse Prevention
- Oral Health
- Tobacco
- Health Literacy
- The Benefits of Bilingualism/Bi-Literacy
- Medication Safety



Parents completed the end of the year survey to share how the program helped them support their child’s learning and development and meet family’s needs. Out of 293 families who received a survey, 59% of surveys were returned for the Fresno Migrant/Seasonal Head Start. Results showed parents were satisfied in most of the areas. Below are the results:



How satisfied are you with the following characteristics of your child's program?



Fresno Migrant/Seasonal Head Start Locations:

Firebaugh

1777 Thomas Conboy. Firebaugh, CA
93622
(559) 659-1576

Five Points

18849 W. Excelsior Road Five Points, CA
93624
(559) 884-2363

Mendota

435 Sorenson, Mendota, CA 93640
(559) 655-3087

Orange Cove

315 Adams Street. Orange Cove, CA 93646
(559) 626-0700

Casa Castellanos

900 S. Newmark Ave. Parlier, CA 93648
(559) 646-0152

Inez C. Rodriguez

1501 Del Altair, Reedley, CA 93654
(559) 416-5638

Selma

12898 S. Fowler Ave, Selma, CA 93662
(559) 896-4479

Fresno Migrant/ Seasonal Head Start is funded by grants from the U.S. Department of Health and Human Services, Administration for Children and Families. Our services are aligned with Head Start Program Performance Standards.