



## Annual Report 2021-2022

# Table of Contents

**Page 3**

**Our Agency**

**Page 4**

**Head Start Director Message**

**Page 5**

**Shared Governance**

**Page 6**

**Agency Budget 2021-2022**

**Page 7**

**Madera Migrant/Seasonal Head Start Budget**

**Page 8**

**Children & Families Served**

**Page 9**

**Enrollment**

**Page 10**

**Medical & Dental Services**

**Page 11**

**Parent & Family Data**

**Page 12**

**Program Staff & Qualification**

**Page 13**

**School Readiness**

**Page 14**

**School Readiness**

**Page 15**

**School Readiness Goals**

**Page 16**

**2021-2022 Family Outcomes**

**Page 17**

**2021-2022 Family Outcomes**

**Page 18**

**Madera Migrant/Seasonal Head Start Locations**



# Our Agency

Community Action Partnership of Madera County (CAPMC), a 501(c)(3) non-profit organization, has dedicated its programs and services to address the needs of the low-income residents of Madera County for over the past four decades. Although Madera County is our primary focus for serving low-income individuals and families, CAPMC has also been awarded funds to expand Head Start services to Regional families in Mariposa County and Migrant/Seasonal families in Fresno County.

CAPMC was established in 1965 as a result of the Economic Opportunity Act (EOA) of 1964. The EOA was signed into law by President Lyndon B. Johnson to support his declaration of an unconditional “War on Poverty.” The act was established to promote school readiness, enhance children’s social and cognitive development by providing educational, health, nutritional, social, and other services to enrolled children and their families. Each county in the United States designated a community action agency to be responsive to the needs of the low-income individuals and families by providing programs and services that assist them in becoming stable and self-reliant.

CAPMC is a leader in “helping people, changing lives.” We have received local and national recognition for implementing creative, cost-effective programs to serve the low-income residents of Madera, Mariposa, and Fresno counties. As the region continues to grow and change, CAPMC is also transforming itself to best serve those in need. CAPMC continues to examine its current programs to ensure that they meet the highest levels of efficiency and effectiveness. As an agency, leaders regularly seek to initiate innovative programs that complement and broaden our existing ones, and search for the best practices from other agencies in our community action network. CAPMC continues to maintain the financial integrity of its programs to maximize resources to the greatest benefit of CAPMC program participants and other customers and stakeholders. Since its inception in 1965, CAPMC’s mission and vision have remained the same:

**Mission:** Helping people, changing lives and making our community a better place to live by providing resources and services that inspire personal growth and independence.

**Vision:** CAPMC will be recognized as a premier social service agency that eliminates the effects of poverty by helping people obtain knowledge and skills to achieve self-reliance and economic stability...one life at a time.

# Head Start Director Message

Community Action Partnership of Madera County's Head Start Department would like to share important information regarding the services that the Madera Migrant/Seasonal Head Start program provides to the children and families in Madera County. The 2021-2022 Annual Report's data will provide an overview of the funding, staffing, enrollment, attendance, school readiness results, and overall services provided by the program. Madera Migrant/Seasonal Head Start is a Delegate of Stanislaus County Office of Education Child and Family Division, who enters into contract with Community Action Partnership of Madera County to serve eligible migrant/seasonal children. In the 2021-2022 program year, CAPMC was funded to serve 579 children. Due to the current on-going challenges with COVID-19 and staff shortages, by the end of the program year, CAPMC was only able to serve 409 children.

During the children and families' participation in the program, they receive comprehensive services inclusive of education, health, nutrition, mental health, and disabilities. CAPMC's primary goal is to provide families with opportunities to engage with their children, increase their knowledge of their children's development, and ultimately, assist them in becoming their children's lifelong educators.

I want to acknowledge our exceptional staff for all their dedication to providing quality educational experiences to our children. Thank you to the Parent Policy Committee, Board of Directors for their continued support and our community partners that make it possible for the program to provide support and resources. This is truly a "community effort" to help families meet their needs and allow children to be successful in their educational path.

A special recognition and gratitude to participating families that allow program staff the honor of educating and caring for their children on a daily basis. It is a privilege to be able to serve the families of Madera County.



Respectfully,

*Maritza Gomez-Zaragoza*

Maritza Gomez

**Head Start Program Director**

**Community Action Partnership of Madera County**



# Shared Governance

## Board of Directors

Deborah Martinez  
**Department of Social Services**  
David Hernandez  
**Madera Unified School District**  
Robert Poythress  
**Madera County Board of Supervisors**  
Steve Montes  
**Madera City Council**  
Diana Palmer  
**City of Chowchilla**  
Debi Bray  
**Madera Chamber of Commerce**  
Alma Hernandez  
**Head Start Policy Council**  
Donald Holley  
**Community Affairs Expertise**  
Eric LiCalsi  
**Criminal Defense and Labor Law**  
Vicky Bandy  
**Early Childhood Education/Development**  
Martha Garcia  
**Central Madera/Alpha**  
Tyson Pogue  
**Eastern Madera County**  
Molly Hernandez  
**Fairmead/Chowchilla**  
Aurora Flores  
**Monroe/Washington**

## Policy Committee

### **Eastin Arcola**

*Representative:* Macrina Lopez  
*Representative:* Fabiola Rendon Salazar  
*Alternate:* Lidia Alondra Tinajero

### **Mis Angelitos**

*Representative:* Margarita Pablo Santiago  
*Representative:* Noemi Hernandez  
*Alternate:* Ester Cervantes  
*Alternate:* Manuela Delgado

### **Los Niños**

*Representative:* Angelica Ramirez Juarez  
*Alternate:* Juana Perez-Lopez  
*Alternate:* Marvit Vasquez Garin

### **Pomona**

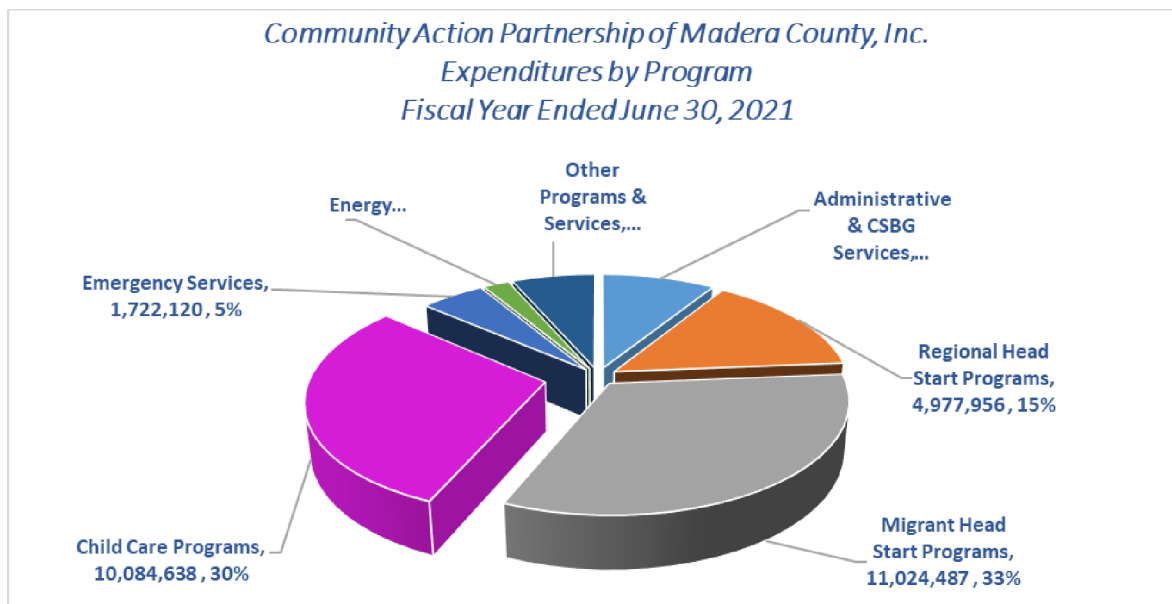
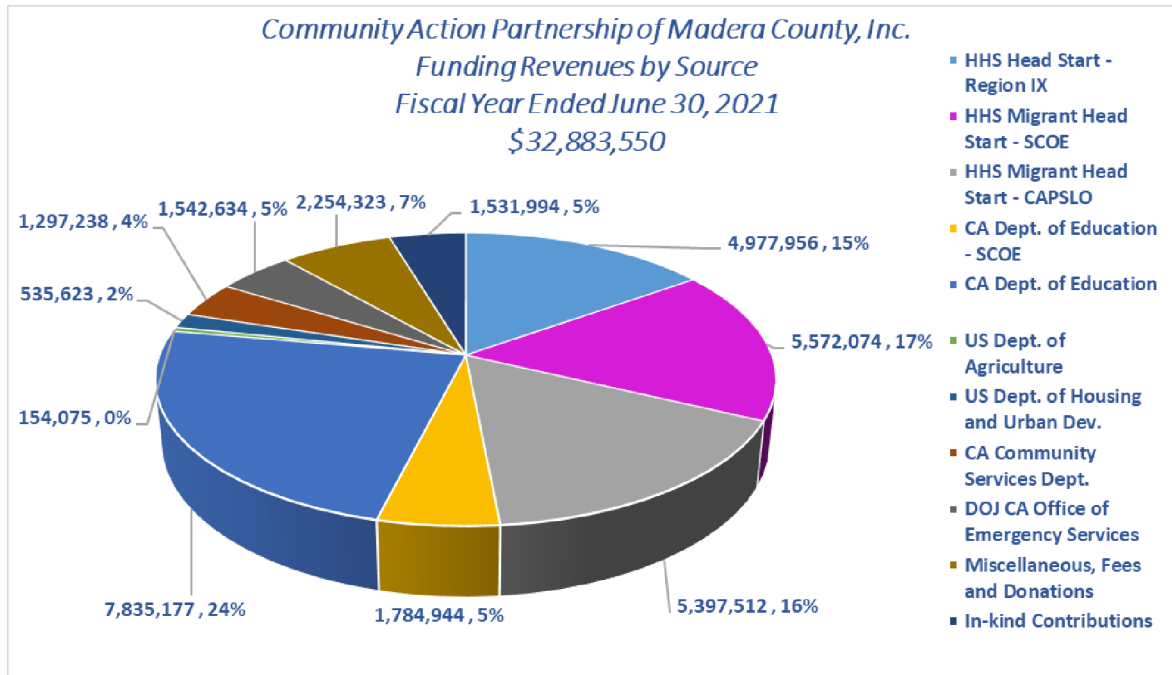
*Representative:* Aracely Vasquez  
*Alternate:* Crystal Navarro

### **Sierra Vista**

*Representative:* Delldi Fuentes  
*Representative:* Ramon Garcia  
*Representative:* Yadira Alvarado  
*Alternate:* Lazaro Lopez  
*Alternate:* Rubi Flores  
*Alternate:* Veronica Morales



# Agency Budget 2020-2021



An audit was conducted by Randolph Scott & Company as of June 30, 2021. In the auditor's judgment, he/she had no reservation as to the fairness of presentation of Community Action Partnership of Madera County financial statements and their conformity with Generally Accepted Accounting Principles (GAAP). A "clean opinion" was given without any reservations of the financial condition. There were no findings or questioned costs or any material or significant internal control weaknesses noted during the audit.



# 2021 – 2022

## Madera Migrant/Seasonal Head Start Budget

Legal Name: Community Action Partnership of Madera County

**Grant Number: 90-CM-9830**

Annual Funding Cycle: March 1, 2021–February 28, 2022

Number of Eligible Children Served in Madera County:

**0-2 Year Old's: 304**

**3-5 Year Old's: 639**

**Total: 943**

Program Option: Center-Based  
Licensed by Community Care Licensing  
Centers are open 10 hours per day.

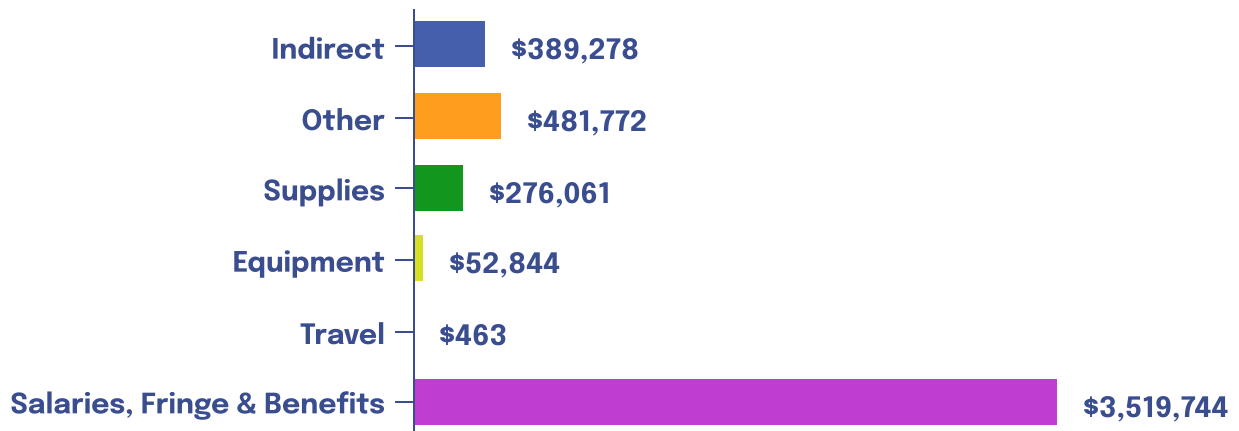
- **Total Funds Awarded: \$5,191,697**

Basic Funds: \$5,159,852

T&TA Funds: \$31,845

- **Non-Federal Funds: \$1,297,924**

### *Fiscal Year 2021-2022 Expenditures*



*In 2022 The office of Head Start acknowledge that Community Action Partnership of Madera County was in full compliance with all applicable Head Start Performance Standards, laws, regulations and policy requirements by issuing a letter based on a terminal review to Central California Migrant Head Start.*



# Children & Families Served

The Madera Migrant/Seasonal Head Start Program did not meet the funded enrollment for the 2021-2022 program year due to COVID-19 pandemic that impacted recruitment and children enrollment. The program continues to offer a center-based option, five days per week. The breakdown of the ages of enrolled children is as follows.

579

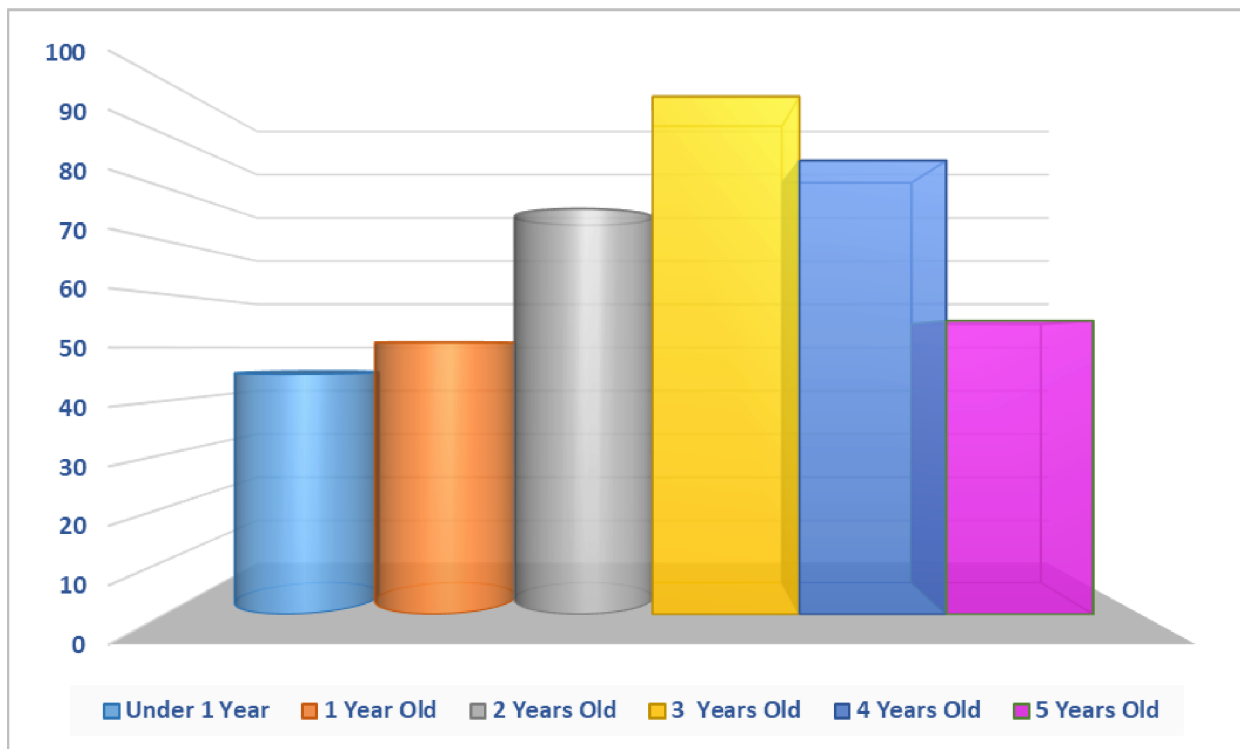
*Funded Number of Children to be served in Madera County*

409

*Total Number of Children Served in Madera County*

317

*Total Number of Families Served*





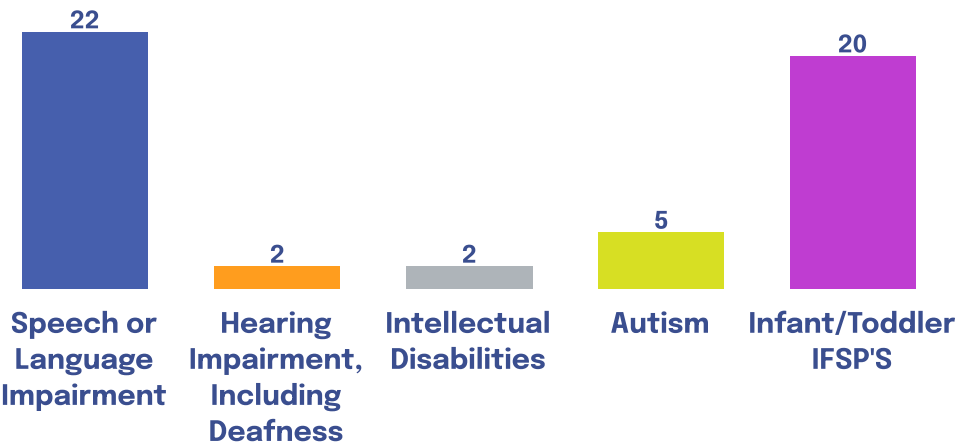
# Enrollment:

<i>Eligibility</i>	<i>Children Enrolled</i>
Income Below 100% of Federal Poverty Line	350
Receipt of Public Assistance	13
Foster Children	0
Homeless	0
Over Income	25

**Average Monthly Attendance**  
**89.02%**

# Children with Disabilities:

## Preschool IEP'S



**Enrolled Children with Disabilities**  
**12.46%**



# Medical & Dental Services

The Madera Migrant/Seasonal Head Start Program aims to provide comprehensive services to all children and families enrolled. Below are the health related services the children and families have received.



### Medical Services

- 409** Number of children with health insurance
- 91%** Percentage of children with up-to-date scheduled preventative health care
- 99%** Percentage of children with up-to-date on all immunizations appropriate for their age

### Dental Services

- 407** Number of children with continuous, accessible dental care provided by a dentist
- 201** Number of children who received preventative care
- 164** Number of infant toddlers who are up-to-date with age-appropriate preventative dental care

### Chronic Health Conditions

Number of children diagnosed with chronic condition needing medical treatment **11**

### Recipients of treatment for chronic conditions

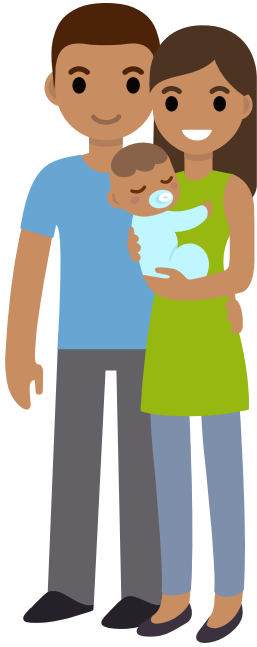
Autism spectrum disorder (ASD) **6**  
 Asthma **2**

### Body Mass Index

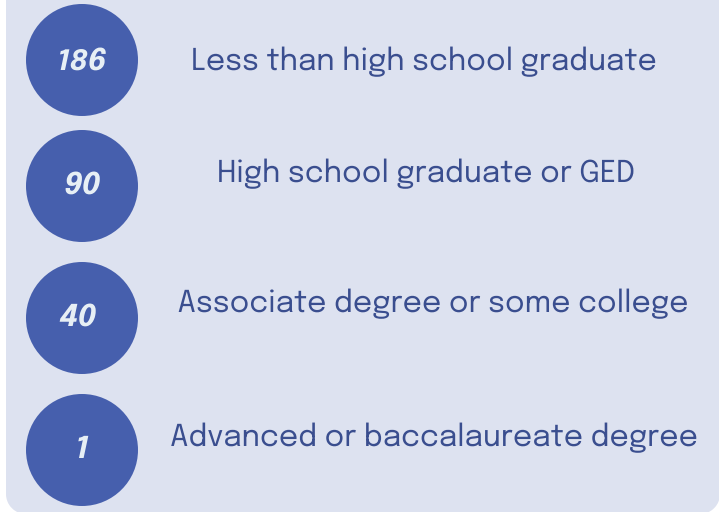
Underweight	<b>9</b>
Healthy Weight	<b>157</b>
Overweight BMI	<b>34</b>
Obese BMI	<b>37</b>



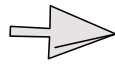
# Parent & Family Data



## Parent Education Level



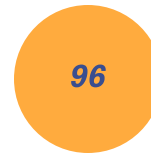
## Family Type



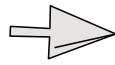
### Two-Parent Families



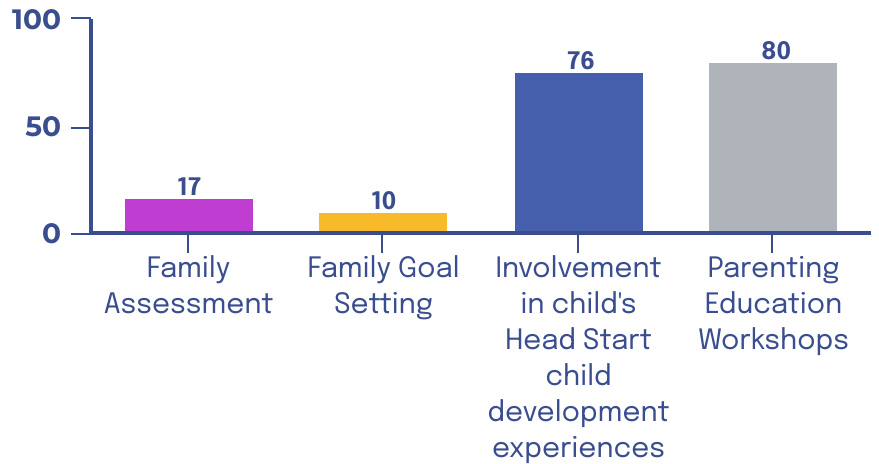
### Single-Parent Families



## Father Engagement



Number of fathers/father figures who were engaged in the following activities during the program year.



# Program Staff & Qualifications

## Mid-Management & Management Staff

<i>Graduate Degree</i>	<i>3</i>
<i>Bachelor's Degree</i>	<i>9</i>
<i>Associate Degree</i>	<i>0</i>



## Teaching Staff

	Preschool Classrooms	Infant/Toddler Classrooms
<i>Graduate Degree</i>	<i>0</i>	<i>0</i>
<i>Bachelor's Degree</i>	<i>4</i>	<i>0</i>
<i>Associate Degree</i>	<i>9</i>	<i>8</i>
<i>Child Development Associate Credential</i>	<i>5</i>	<i>7</i>
<i>Total</i>	<i>18</i>	<i>15</i>

*Total Number of Staff*

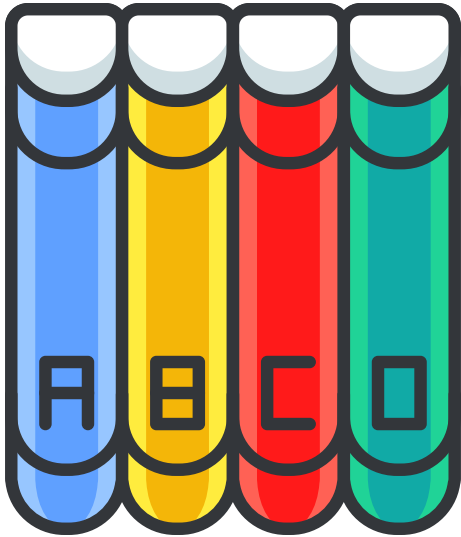
**93**

*Staff who are current or former Head Start Parents*

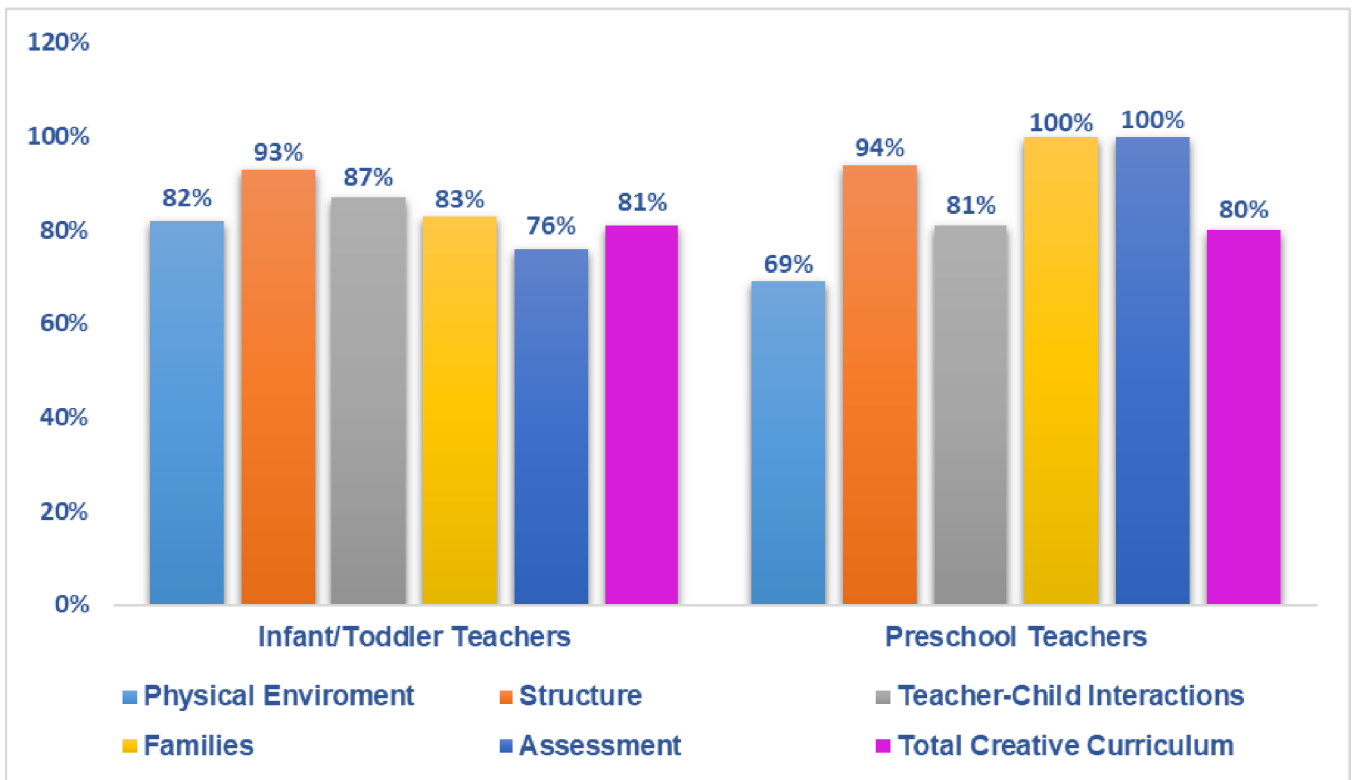
**26**



# School Readiness



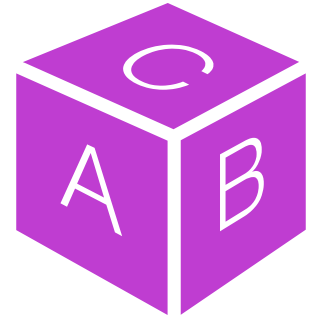
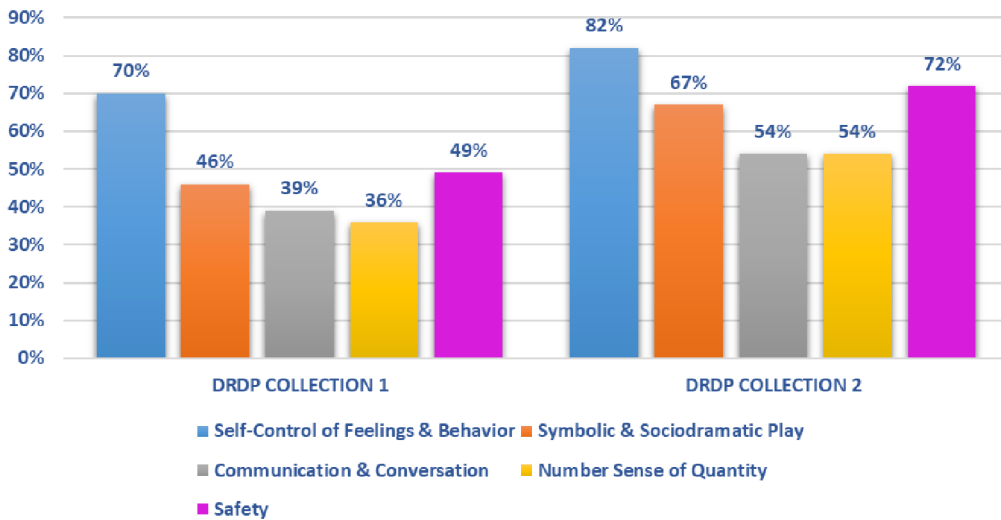
The Creative Curriculum provides long lasting learning opportunities for children from birth to preschool age. Implementing this curriculum to Fidelity is an essential practice to ensure that the interactions and activities implemented in the classroom result in positive child outcomes and achievement of school readiness goals. It helps teachers provide engaging interaction and environments for children. Fidelity implementation allows staff to improve teaching practices to ensure that all children reach their appropriate development. It also supports teaching staff in problem-solving to strengthen curriculum implementation. The 2021-2022 average percent on the performance of fidelity is below.



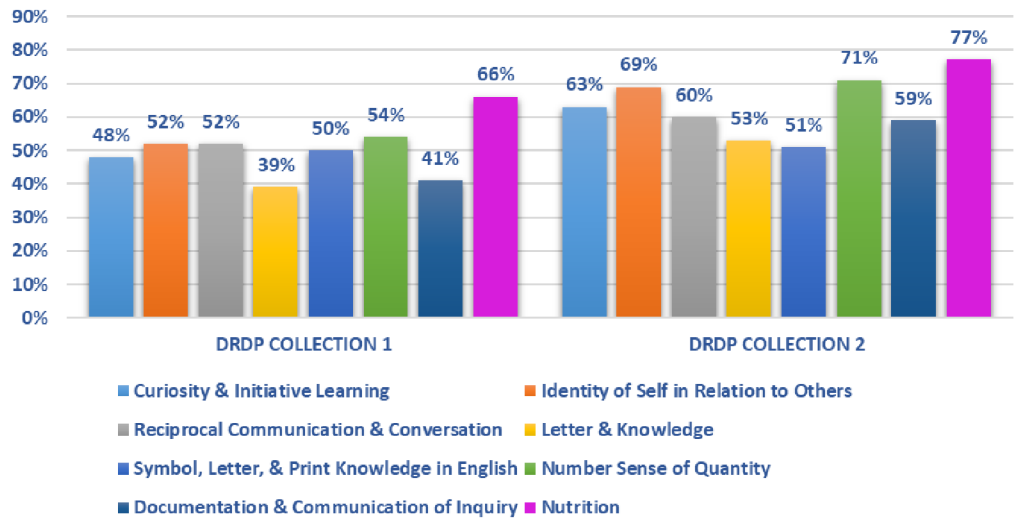
# School Readiness

The California Department of Education Early Learning and Care Division, Desired Results system is designed to improve the quality of programs and services to all children from birth through 12 years of age who are enrolled in early care and education programs. Desired Results (DRDP) are defined as conditions of well-being for children and families. The Madera Migrant Seasonal Head Start Program analyses data three times during the season. Below are the 2021-2022 DRDP collection results from the beginning and end of the program year.

## Targeted School Readiness Goals Ages 0-3



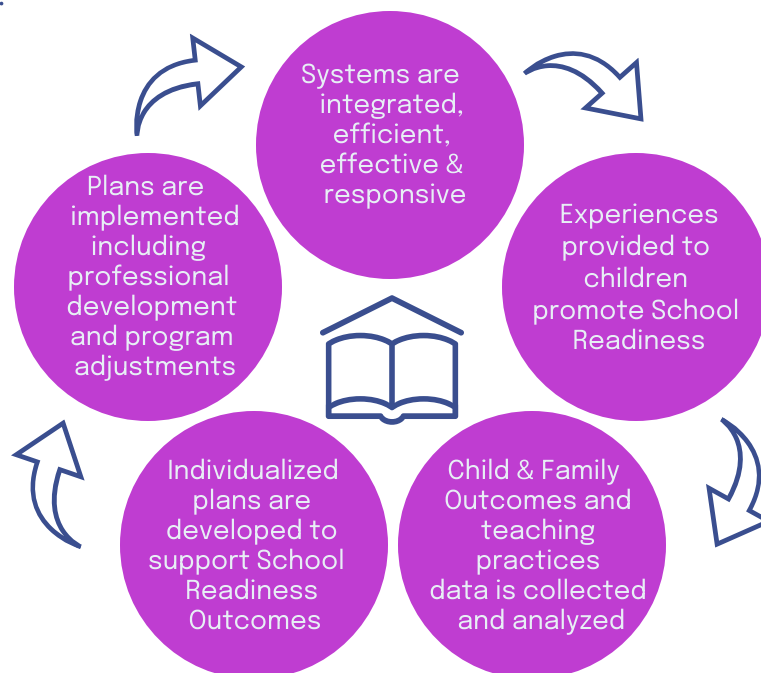
## Targeted School Readiness Goals Ages 3-4



# School Readiness Goals

The Improving Head Start for School Readiness Act of 2007 and the School Readiness in Programs Serving Preschool Children Program Instruction (ACFPI0HS-11-04) require Head Start programs to adopt school readiness goals for preschool children.

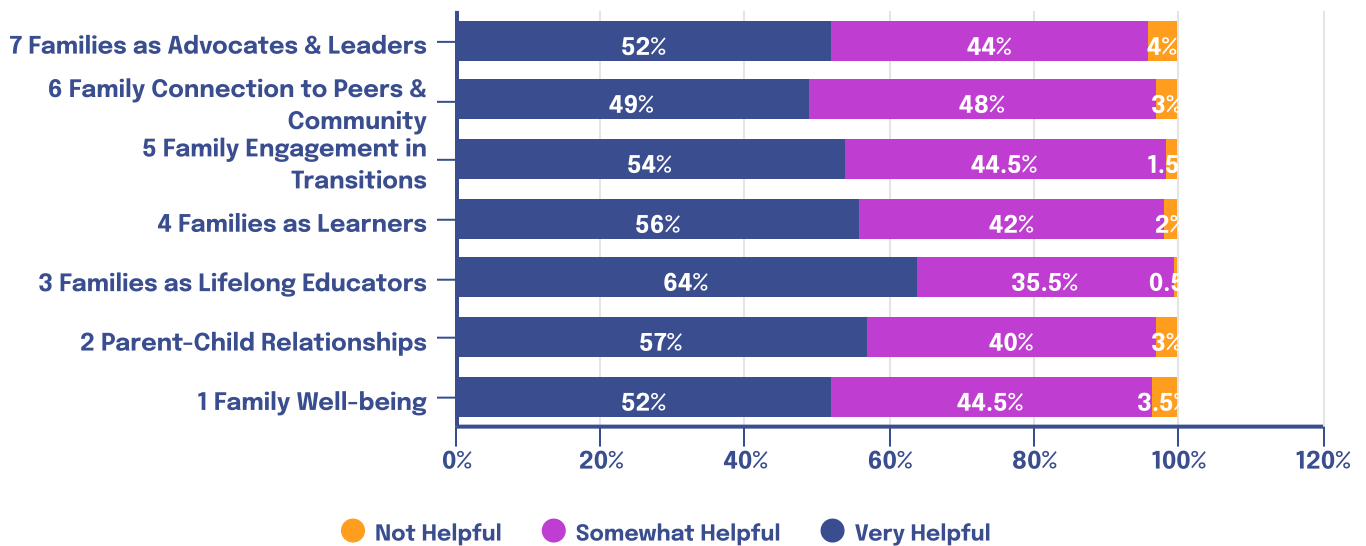
- The School Readiness Plan describes how CAPMC with SCOE/CCMHS will strategically integrate program services to improve the School Readiness Outcomes of Head Start children and families.
- The School Readiness Goals reflect that families are children’s first teachers. The goals encompass the five essential child development domains: Approaches to Learning, Language & Literacy, Cognition & General Knowledge, Physical Development & Health, and Social & Emotional Development.
- Development of School Readiness Goals, a crucial part of the School Readiness Plan, was guided by input from the Head Start community and approved by the parents of Head Start children and the Governing Bodies.
- Two sets of School Readiness Goals were adopted, the first set for expectant families, infants and toddlers, and the second set for preschool-aged children.
- The School Readiness Goals for Expectant Families, Infants and Toddlers were developed in alignment with the Head Start Framework for Programs Serving Infants and Toddlers and their Families, California Infant/Toddler Learning & Development Foundations, California Desired Results System, the Head Start Child Development and Early Learning Foundations, and the Program for Infant and Toddler Care.
- The goals for preschool children were developed in alignment with the Head Start Child Development Early Learning Framework, California Preschool Learning Foundations, California Desired Results System and the Common Core Standards for kindergarteners.



# 2021-2022 Family Outcomes

Out of 317 families in the summer and winter program, 304 (96%) of parents completed the Program Satisfaction Surveys to share their opinion on how much they and their families have benefited from the program. The survey is aligned to The Head Start Parent, Family, and Community Engagement Framework. The survey questions measure the impact in each of the following areas: Family Well-being, Positive Parent-Child relationships, Families as Lifelong Educators, Families as Learners, Family Engagement in Transitions, Family Connections to Peers and Community and Families as Advocates and Leaders. Below are the results:

## How Much Did The Program Helped You & Your Family



Based on the results from graph above, the top three areas where parents received the most help were Families as Lifelong Educators, Families as Learners and Parent-Child Relationships.

## Parent Curriculum - Ready Rosie

The program offered parents the opportunity to participate in the Ready Rosie parent curriculum during the program year 2021-2022.

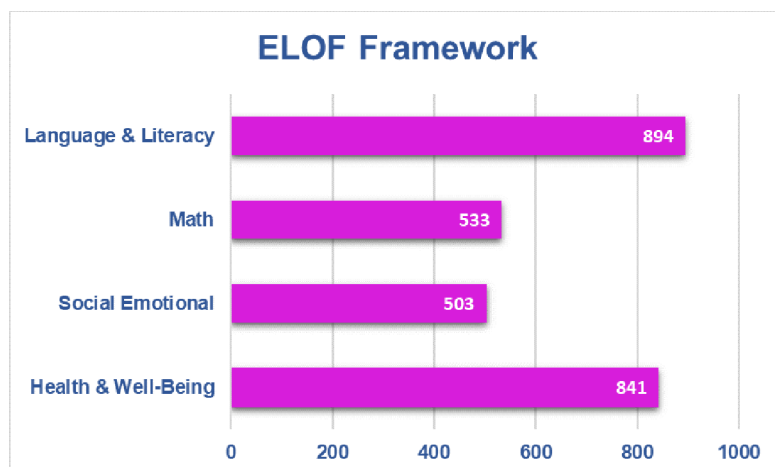
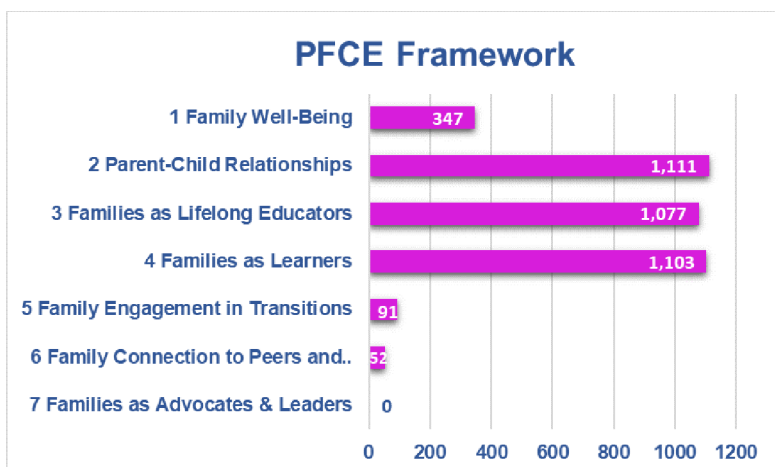
Out of 317 families, 140 registered to participate in the platform. Out of the 140 (44%), 138 (98%) were connected to a classroom.





# 2021-2022 Family Outcomes

A total of 1,015 videos were viewed by parents. Out of the 1,015 videos, the following is a breakdown of views related to the Early Learning Outcomes Framework (ELOF) and the Parent, Family, and Community Engagement (PFCE) frameworks:



Base on the results, 3,781 video views were aligned to the Parent, Family, and Community Engagement Framework (PFCE) and 2,771 to the Early Learning Outcomes Framework (ELOF).

Parents also participated in Ready Rosie educational workshops during the parent meetings. The following are the topics provided to them:

1. *Ready for Kindergarten*
2. *Words Matter - Language and Literacy*
3. *Positive Discipline Strategies*
4. *Relationships Matter*
5. *Family Role in Building Social Emotional Skills*

Parents actively participated not only in building their skills as their child's first teacher, but also in sharing decision-making responsibility for program planning, goals and objectives, recruitment criteria, selection and enrollment of children, the annual program assessment, and personnel policies during the center parent meetings or Policy Committee meetings. Other topics presented to parents during the parent meetings are the following:

1. *Financial Literacy*
2. *Social Emotional - Stress and Anxiety*
3. *Nutrition - My Plate and Healthy Cooking*
4. *Health Topics*



# Madera Migrant/Seasonal Head Start Locations:

## **EASTIN ARCOLA**

29551 Avenue 8, Madera, California 93637  
(559) 675-3562  
Capacity: 12 Infants/12 Toddlers/20 Preschoolers

## **MIS ANGELITOS**

101 East Adell, Madera, California 93638  
(559) 673-2564  
Capacity: 8 Infants/8 Mobile Infants  
8 Toddlers/44 Preschoolers

## **LOS NIÑOS**

29171 Desha Street, Madera, California 93638  
(559) 662-1788  
Capacity: 8 Infants/8 Toddlers/20 Preschoolers

## **POMONA**

11777 Woodward Way, Madera, California 93638  
(559) 661-1169  
Capacity: 12 Toddlers/20 Preschoolers

## **SIERRA VISTA**

917 East Olive Avenue, Madera, California 93638  
(559) 675-9137  
Capacity: 23 Infants/12 Toddlers/57 Preschoolers

***Madera Migrant/ Seasonal Head Start is funded by grants from the U.S. Department of Health and Human Services, Administration for Children and Families. Our services are aligned with Head Start Program Performance Standards.***